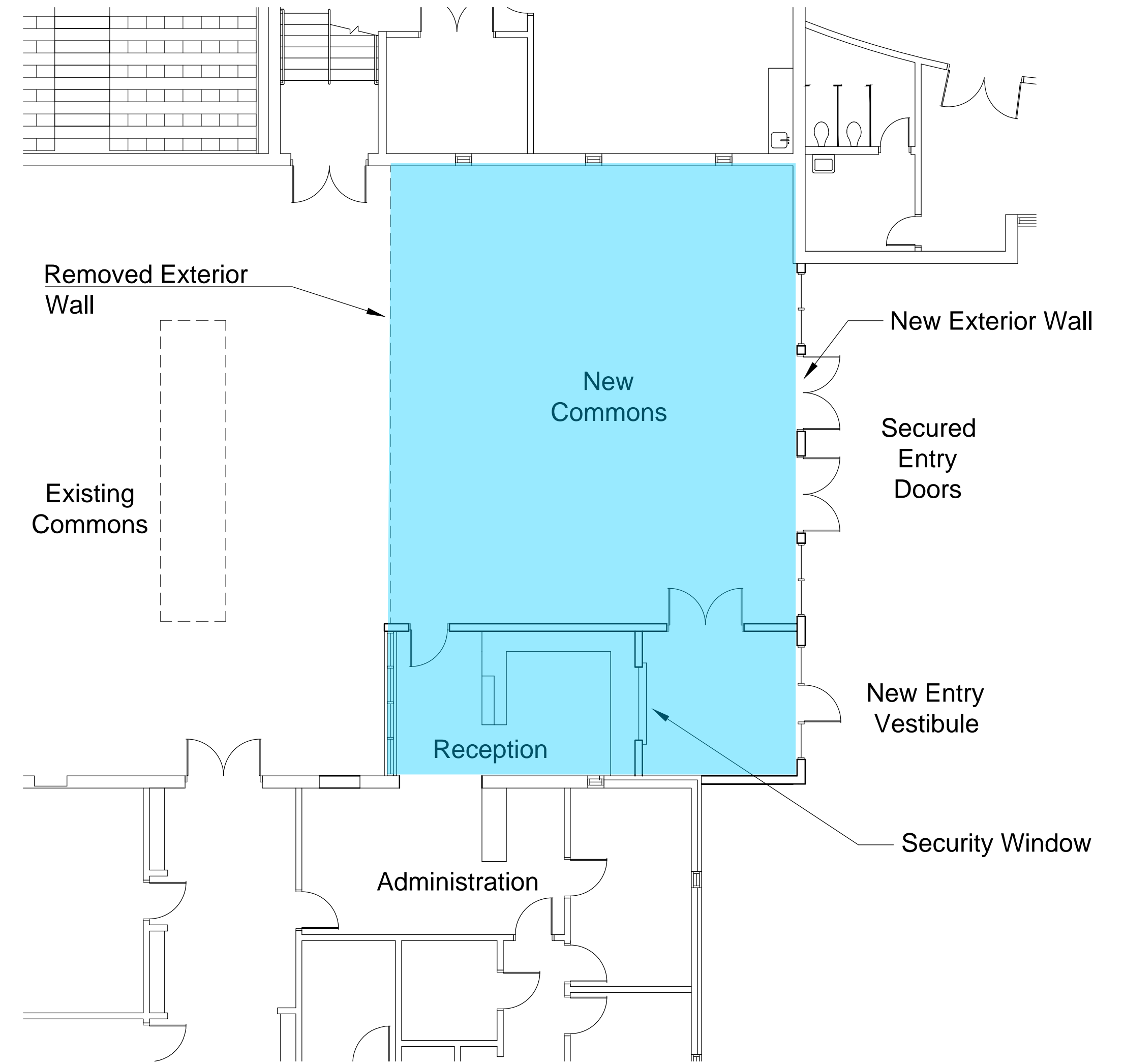


First Floor Plan - Schematic Design - Entry Renovation

SCALE: 1/16" = 1'-0"

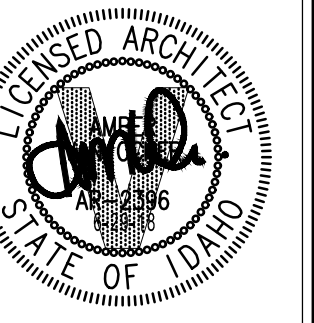


Enlarged Floor Plan - Schematic Design - Entry Renovation

SCALE: 1/8" = 1'-0"



2400 E RIVERWALK DRIVE  
BOISE, IDAHO 83706  
WWW.LKVARCHITECTS.COM  
208.336.3443



East Minico Middle School  
Minidoka County Joint School District 331

441 East Porter Street, Kuna, Idaho

DATE: August 2018  
LKV PROJECT #:  
REVISIONS:

DRAWN BY: AV0  
CHECKED BY: AV0

BID SET

DRAWING NO.